



COMTRACK L/S/C

**Small Size & High Performance
Telemetry Antenna**



TELEMETRY GROUND SOLUTIONS

COMTRACK is the choice of **trust, simplicity and performance** of more than 100 telemetry tracking operators. Military aircraft testing, helicopters, commercial aircraft and even launch vehicles: COMTRACK is an **affordable telemetry reception extension** where a roomy and cumbersome parabolic system wouldn't fit.

With its very **compact and environmentally-rugged form-factor**, the embedded phase array autotracking antenna offers **telemetry reception in L, S or C-band from zenith up to 150 kms range**. Its smart integration combining high elevation reception and long range under a single protective radome also enables dual-band mountings for systems having to operate in today's and tomorrow's frequencies.

Coming as a single enclosure item, the COMTRACK is a **handy transportable antenna**, as it may also be easily and seamlessly integrated on any infrastructure.



Fixed & Rotary Wing



Missile Testing



Mobile Stations

L / S / C BANDS

L, S or C Band, Swappable Mobile Part, Dual Band S+C

COST-EFFECTIVE

Simple and robust mechanics provides high performance with limited maintenance

TRANSPORTABLE

Lightweight (35kg) & Small Size, Easy on-truck setup

AUTO & SLAVE TRACKING

High Tracking Accuracy and Long Range Tracking, GPS Tracking made easy

ENVIRONMENT PROOF

Full Radome Protection against rain, sand, dust...

COMTRACK L/S/C

TRACKING PERFORMANCE

Tracking Accuracy +/- 1°
 Azimuth Unlimited, Continuous
 Azimuth Speed > 50°/s
 Azimuth Acceleration > 30°/s²
 Tracking Modes Autotrack, Slave (i.e. GPS), Sector Scan, Full Scan
 Switch between Directional/Omni Manual or Automatic

ANTENNA PERFORMANCE

Directional Antenna	L-Band	S-Band	C-Band
Bandwidth	1435-1545 MHz	2180-2480 MHz	4400-5250 MHz
Gain (typ)	16 dBi	21 dBi	25 dBi
G/T (typ)	-6 dB/K	-2.5 dB/K	0 dB/K
Polarization	RHCP + LHCP		
Beamwidth	AZ15° / EL30°	AZ11° / EL18°	AZ4,5° / EL8°

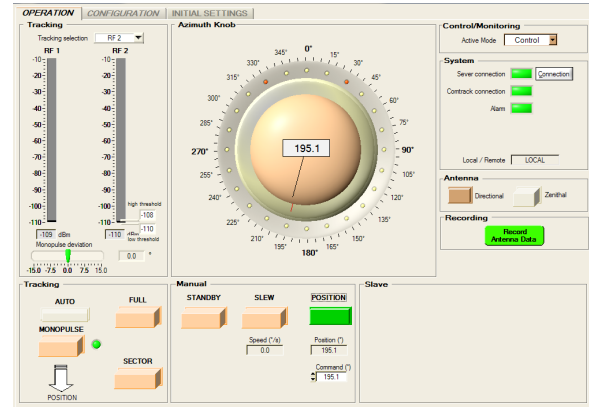
Acquisition Antenna	L-Band	S-Band	C-Band
Type	Omni	Omni / Acq panel	Acq panel
Gain (typ)	1,5 dBi	1,5 dBi / 15 dBi	15 dBi
Beamwidth	Az 360° / 25° to Zenith	Az 360° / 25° to Zenith AZ11° / EL65°	AZ7° / EL65°

VARIANTS / OPTIONS

Baseline L-Band, S-Band, C-Band, S+C Band
 Cable Set 20m / 42m / 60m
 GUI Optional PC with SW installed
 Mast Optional 1,2m fixed mast or 5,5m telescopic mast
 North Compass Optional for mobile application

MONITORING & CONTROL

Local Control Control SW running on a laptop
 User Interface Keyboard, mouse, thumb wheel
 Remote Control Same GUI, thru TCP-IP



ENVIRONMENT

Dimensions 790mm diameter x 635mm height
 Weight < 35 kg (77lbs)
 Operating Temperature -40°C to +50°C
 Storage Temperature with cold start at -35°C
 Relative Humidity MIL-STD-810G method 507.5
 Environment Protection IP63 / CE marking
 Wind Up to 180 km/h
 Power Supply 115V or 230 VAC +/-5%, 50-60 Hz
 Power Consumption Typical 150W, maximum 750W
 Vibration MIL-STD-810G method 514.6
 Transport Case 840 x 840 x 708 mm (33" x 33" x 28")



S+C Band COMTRACK

GLOBAL SALES

5, Avenue des Andes - CS 90101 - 91978 Courtaboeuf Cedex - FRANCE - Tel.: +33 1 69 82 78 00 - Email: sales.sdsy@safrangroup.com

USA

3005 Business Park Dr - Norcross, GA 30071 - USA - Tel.: +1 770 753 4017 - Email: sales@SafranDataSystemsUS.com