

DATA SYSTEMS



SPARTE 300 L/S/C

Tracking Antennas

6ft (1.8m), 8ft (2.4m) & 10ft (3m)



TELEMETRY GROUND SOLUTIONS

The SPARTE 300 series antenna is a field and time proven product delivered to customers for **mission-critical applications** where the telemetry reception is at stake. This robust antenna ensures to our customers **highly accurate operations**, as well as a long **lifetime and simple maintenance tasks**.

The SPARTE 300 series empowers users with a **variety of applications**, such as aircraft tracking, very high speed targets with high dynamics, or duplex datalinks with an Rx/Tx system. Additionally, the numerous and customizable I/Os provide users with the ability to operate the antenna in a **multi-site tracking** fashion, with **master-slave communications** between smaller and larger models.



Launch Vehicle Telemetry



Missile Testing



Fixed & Rotary Wing

BEST-IN-CLASS SERVO CONTROLS

Direct Drives, User Selectable, Servo Algorithms

HASSLE-FREE MAINTENANCE

Easily Accessible Electronics & Mechanics Above Az

C-BAND FIELD UPGRADEABLE

Simple Add-On without any Structural Change

SCM 1000 HZ SCAN RATE

Common Design for Main Feed & ACQ-AID Feed

SHIPBORNE READY

IMU Add-On for Shipborne Operations

SPARTE 300 L/S/C

SYSTEM SPECIFICATIONS

Pedestal

Azimuth Travel Range Unlimited
 Elevation Travel Range -5° / + 185° option -15° / + 195°
 Angular Velocity ≥ 30 °/s on Each Axis
 Angular Acceleration ≥ 40 °/s² on Each Axis

Reflector

Aluminum Alloy Reflector / Any Kind of Payload

Servo-Control

Static Pointing Accuracy ≤ 0.2° rms
 Tracking Accuracy ≤ 0.1° rms
 Acceleration Lag 0.2°/s²

Antenna Control Unit

Manual, Slew, Scan, Slave (2 x Inputs), RF Tracking, Program-Track, GPS Slaving
Advanced Features: Autotracking (Automatic ACU Modes Management), Auto Acquisition (with Adjustable Signal Thresholds), Multipath Clipping, Centralized Remote Control for Receivers, Recorders, ...
Tracking Signal Inputs 4x Pairs of AM+AGC
Auto-Diversity LHCP/RHCP, Best Telemetry Channel
Diagnostic Tool Continuous BIT, Servo-Control, Tracking, Y-Factor, Logbook, Parameters Recording

General Characteristics

Power Standard 110 - 230 Vac 50-60Hz
 Power Consumption 2.5 kVA Peak and 4 kVA with Max Wind Load
 Antenna Weight 550 kg (1212 lbs)

ENVIRONMENTAL SPECIFICATIONS

Operating Temperature Range

Outdoor Equipment -25 to +55°C / +13 to +122°F

Operational Wind in 2.4 m

Mean Up to 80 km/h
 Gust Up to 100 km/h
 Survival Wind Up to 200 km/h

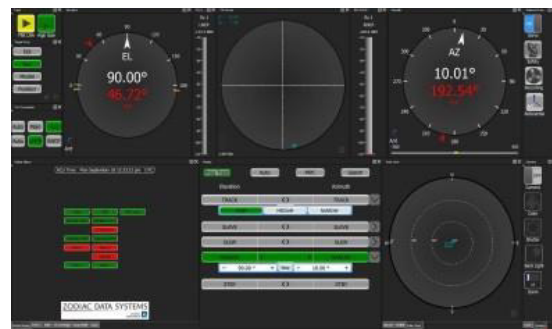
Humidity

Outdoor 95%
 Indoor 85% Non-Condensing

OPTIONAL ITEMS

- ▶ Operator control desk
- ▶ Cable wrap (±360°)
- ▶ Video camera for visual target aiming
- ▶ SCM feed up to 1000Hz tracking rate
- ▶ Acquisition aid and omni antennas
- ▶ 3rd channel and embeded test dipole
- ▶ Low gain switching for short range
- ▶ Single / Dual / Tri-band feed
- ▶ 6ft, 8ft, 10ft reflectors available
- ▶ Shipborne version (Inertia Measurement Unit and -15° lower EI limit)
- ▶ Trailer-mounted version
- ▶ GPS time / position / heading synchronization (single or differential)
- ▶ IR tracking capability
- ▶ Custom form factors available on demand

	1.8 M / 6 FT	2.4 M / 8 FT	3.0 M / 10 FT
Tracking	8 Dipoles Monopulse		
Receive Frequency Range	1429 - 1545 MHz / 2200 - 2400 MHz / 4400 - 5250 MHz		
Receive Polarization	RHCP and LHCP		
Axial Ratio	≤ 1.5 dB on Axis		
-3dB Beamwidth @ 2.3GHz	5°	3.8°	2.9°
G/T @2300 MHz, No Filter, 10° Elevation, 20°C Clear Sky	6.3 dB/K	8.8 dB/K	10.7 dB/K
Maximum Wind for Nominal / Degraded Performance	100 / 120 km/h	80 / 100 km/h	50 / 75 km/h



GLOBAL SALES

5, Avenue des Andes - CS 90101 - 91978 Courtaboeuf Cedex - FRANCE - Tel.: +33 1 69 82 78 00 - Email: sales.sdsy@safrangroup.com

USA

3005 Business Park Dr - Norcross, GA 30071 - USA - Tel.: +1 770 753 4017 - Email: sales@SafranDataSystemsUS.com